



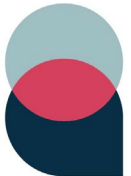
INVERT THE BURDEN

Atlanta Regional Commission
March 27, 2024



INVERT **THE** BURDEN

[Video Link](#)



Solution

Led by United Way, ARC, and
Georgia Health Policy Center



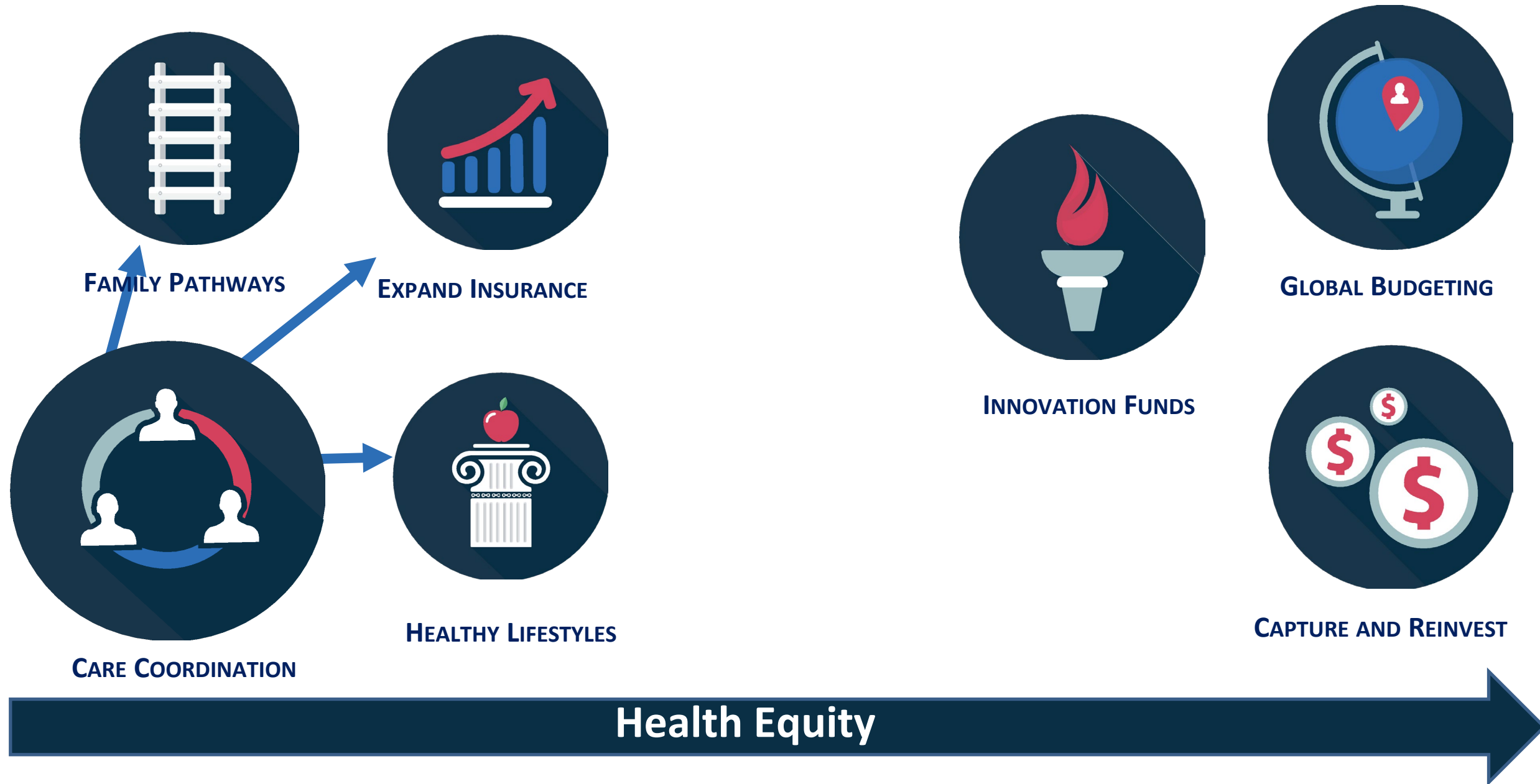
Funders (CDC, Kaiser, St.
Joseph's Healthcare, Grady,
and the Lead Organizations)

Public Health, Hospitals,
FQHCs, Physicians, Behavioral
and Other Providers

Business, Education, County
Commissioners, Faith Leaders,
Insurers, Philanthropy

Atlanta Regional Collaborative for Health Improvement

ATLANTA TRANSFORMATION SCENARIO



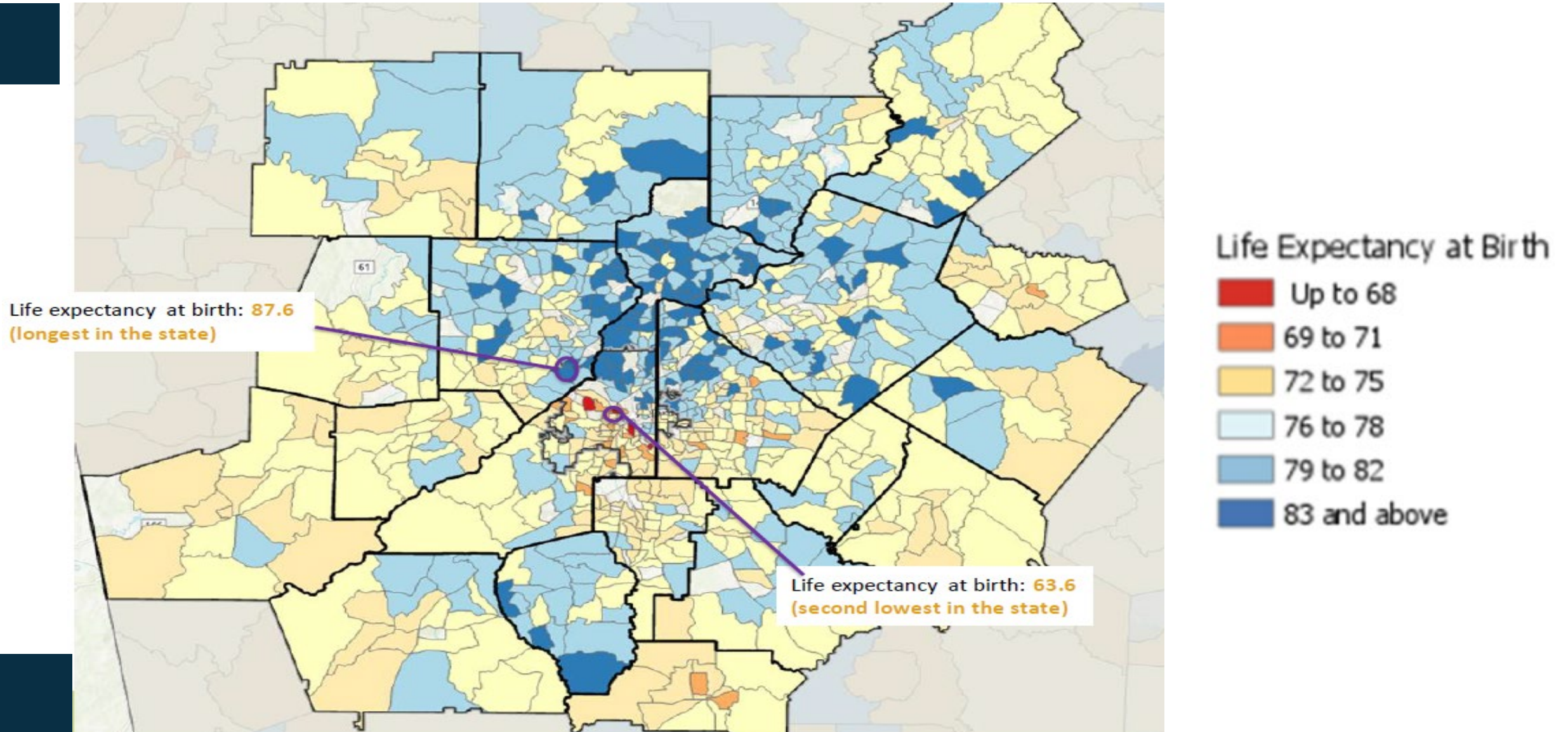
THE ATLANTA REGIONAL COLLABORATIVE FOR HEALTH IMPROVEMENT (ARCHI)

OUR MISSION: ARCHI collaborates to invert the burden from those marginalized from good health, engaging a broad network of intersectional partners to sustainably change the system and solve health inequities in metro Atlanta.

- **115+ Organizations, 28-Year Goals**
- **Neutral Convener**
- **Collective Impact**
- **Data and Evaluation**
- **Stewardship**

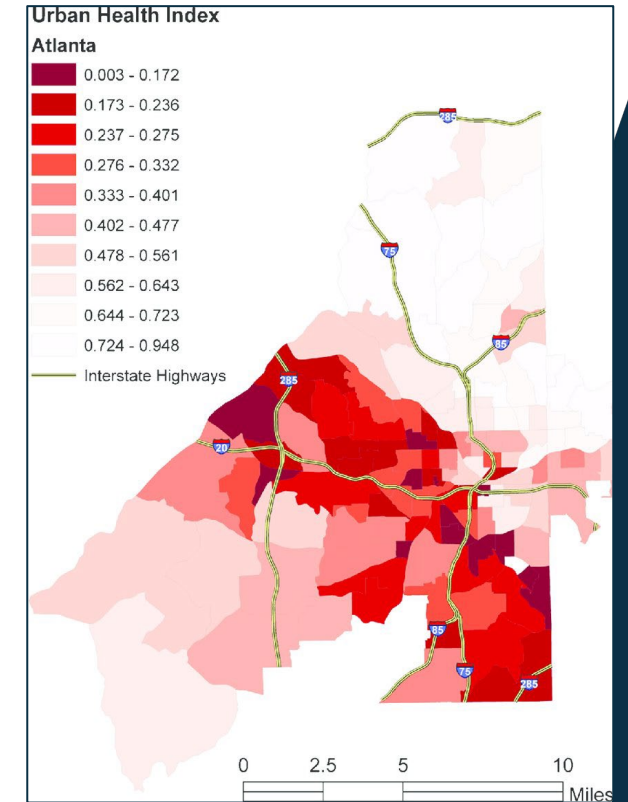
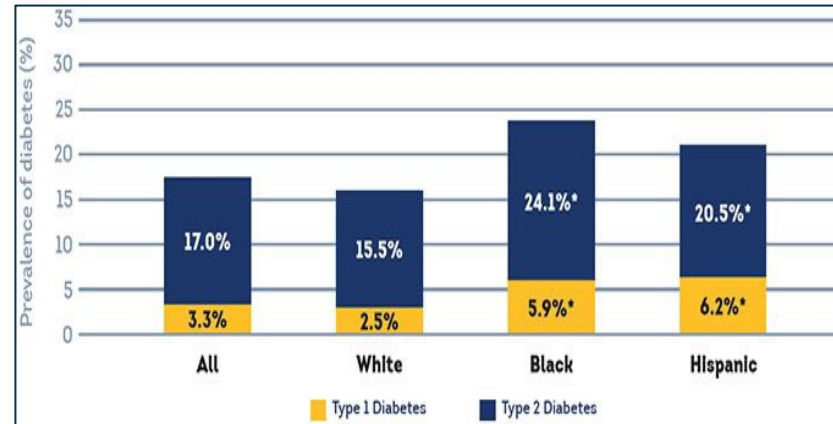
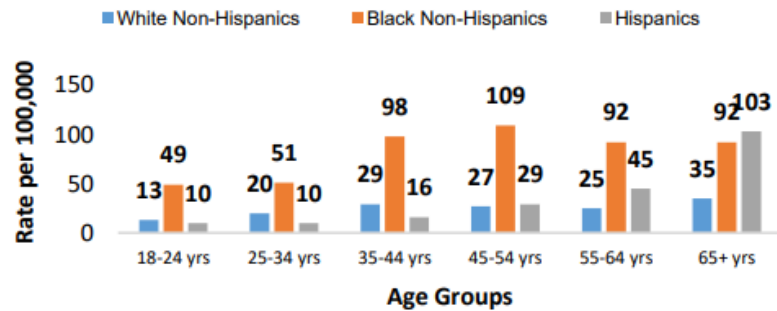


REGIONAL LIFE EXPECTANCY (ARC)

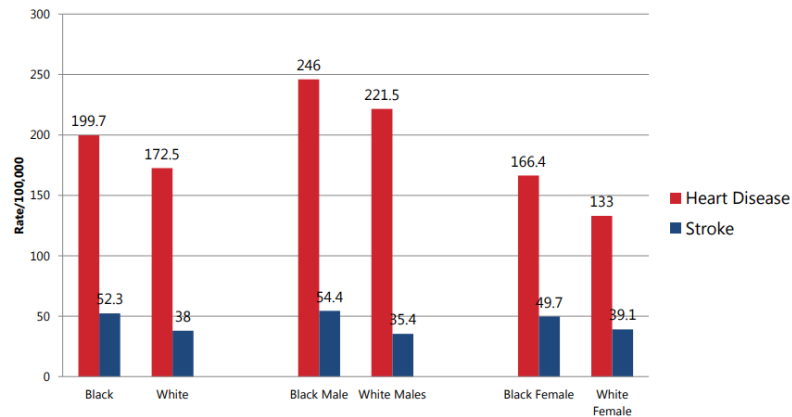


KILLER DISPARITIES

Figure 8. Age-Specific Asthma Hospitalizations Rate Among Adults, by Race/Ethnicity, Georgia, 2018



Age-Adjusted Heart Disease and Stroke Mortality Rate by Race and Gender, Georgia 2014



HIV Prevalence Rate Ratios, by Race/Ethnicity, 2020



The rate of **Black males** living with an HIV diagnosis is 5.9 times that of **White males**.



The rate of **Black females** living with an HIV diagnosis is 16.1 times that of **White females**.

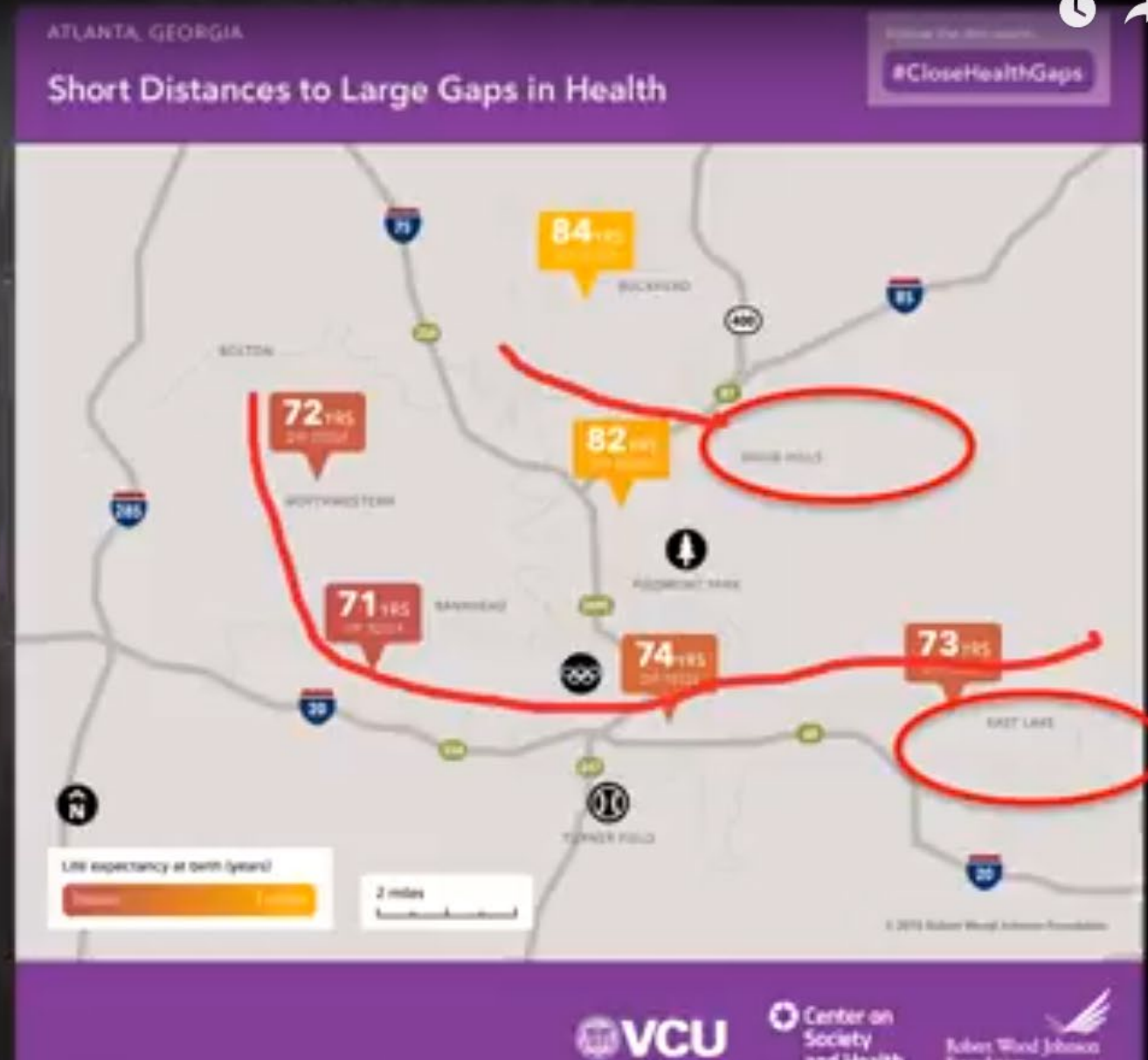
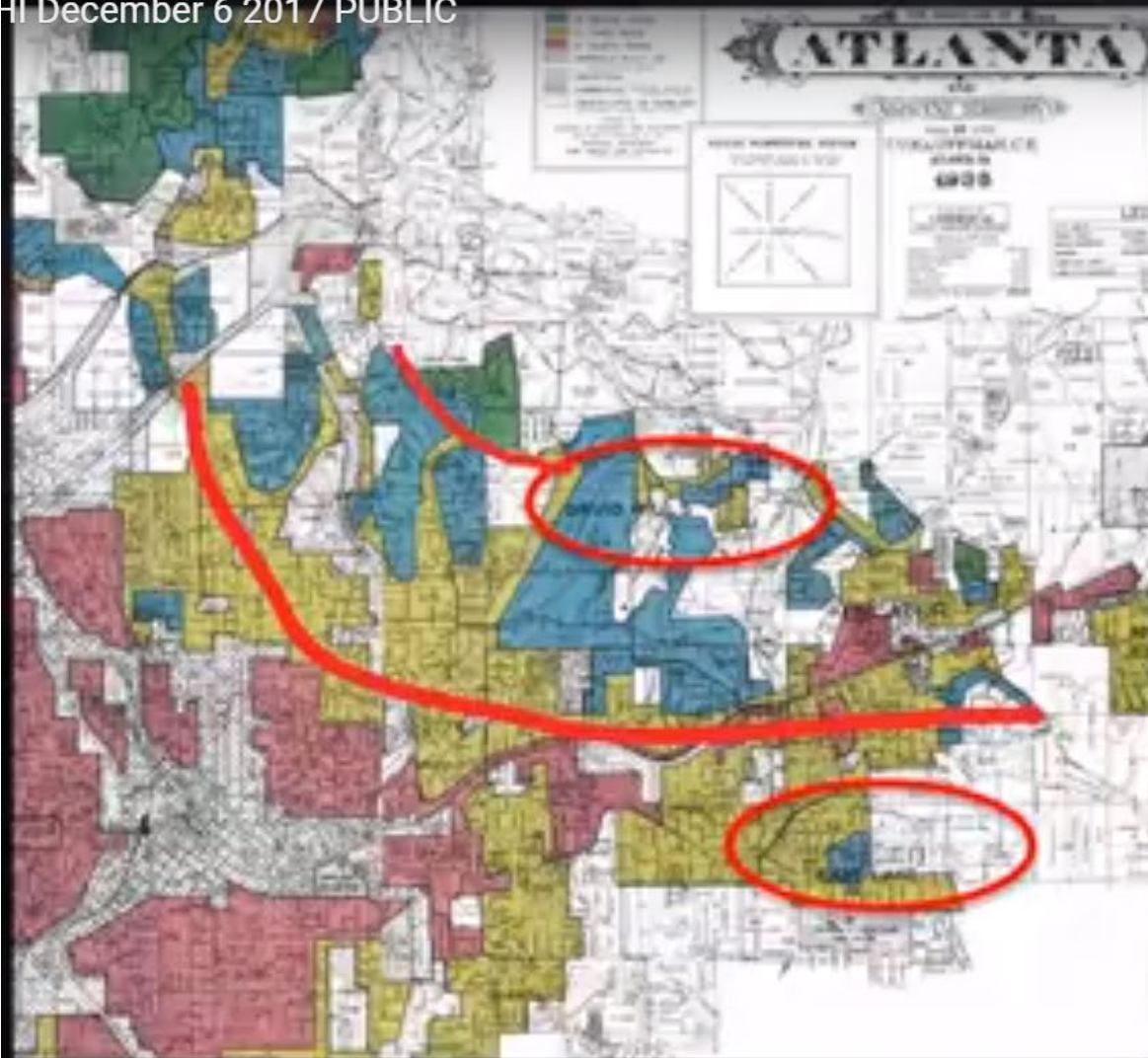


The rate of **Hispanic/Latino males** living with an HIV diagnosis is 2.0 times that of **White males**.



The rate of **Hispanic/Latina females** living with an HIV diagnosis is 5.3 times that of **White females**.

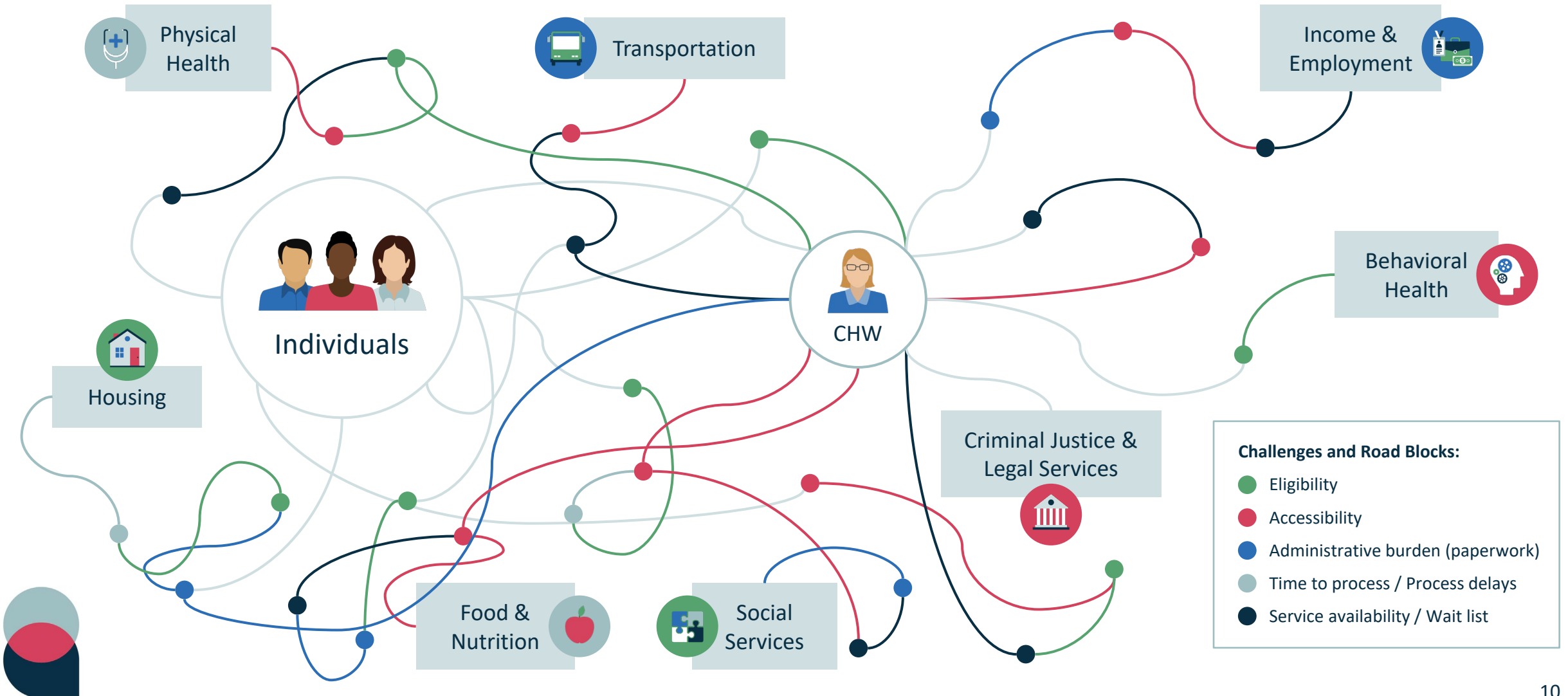
HI December 6 2017 PUBLIC





BURDEN OF NAVIGATION FALLS HEAVILY ON THE INDIVIDUAL

and the staff working to support them



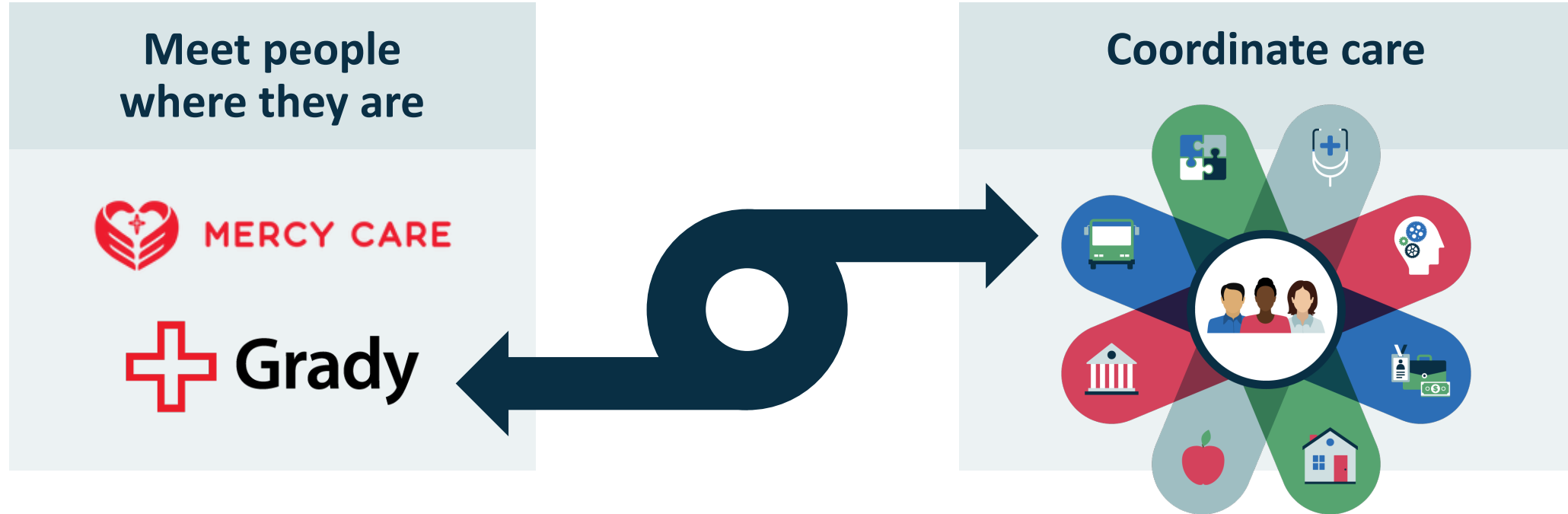
BURDEN OF NAVIGATION FALLS HEAVILY ON THE INDIVIDUAL

and the staff working to support them



COMMUNITY RESOURCE HUB

Invert the burden of navigation from the individual to the system



Bi-directional
data sharing

Warm to
"hot" hand
offs

CHW / navigator /
care coordinator

Aligned & mutually
reinforcing incentives

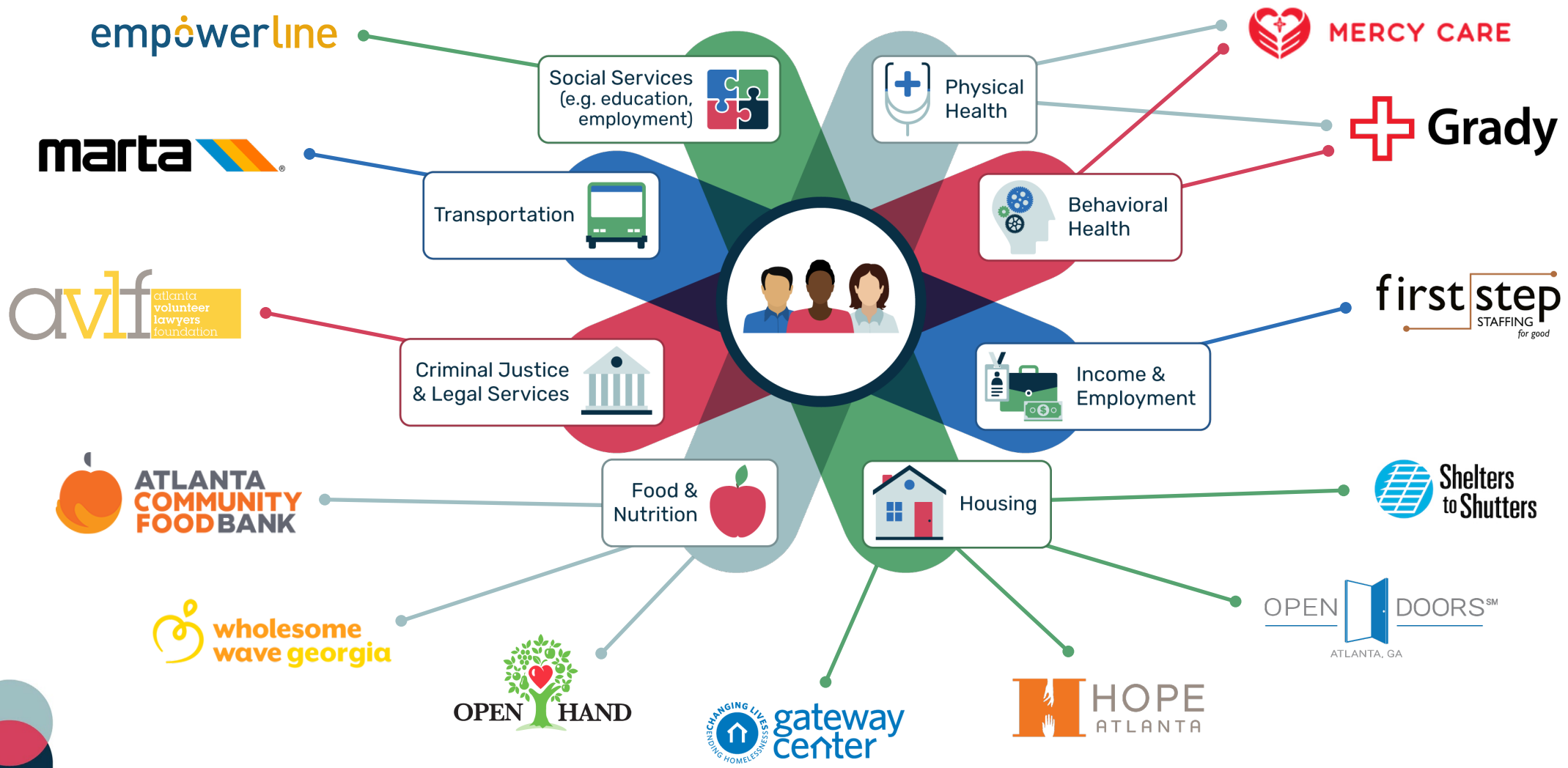
- Every organization
has a "win"

Simple re-connections
when assistance is
needed again

Clear governance
structure and
norms

Impact tracking
over time

COMMUNITY RESOURCE HUB PARTNER NETWORK



HEALTH OUTCOMES

Community Resource Hubs Improve Community Health

39% decrease in emergency room visits and inpatient admissions at partnering hospital

86% of patients lowered their blood pressure, as reported by a partnering federally qualified health clinic

91% of patients in need of nutrition education were connected to relevant programs

61% lowered BMI, as reported by a partnering federally qualified health clinic





Rent, Mortgage, Utility Relief



- **60%** of case managers' time is being spent on **administrative work**
- Staff operate in an average of **3.4 different technologies** to deliver one service
- It takes an individual **20 hours** of work to receive assistance with one month's rent
- It requires an additional **9.25 hours** of the case manager's time to process the application and payment

- **STREAMLINING ACCESS TO RENTAL ASSISTANCE**
- **ADDRESSING INTEROPERABILITY AND DATA SHARING BETWEEN CLINICAL AND COMMUNITY SETTINGS**



RENTAL ASSISTANCE PILOT

Universal application created; single point of entry for multiple agencies

Over 20,000 applications received

Average time to completion: 6 minutes

73% have not received prior assistance

90% for rent and/or utility relief, average request \$3,400

40% utility request (some combined with rent requests)

- Power - \$870
- Gas - \$1,870
- Water - \$700

8% match rate; 1% fund rate

Growth from 4 partners to now 18 across metro Atlanta



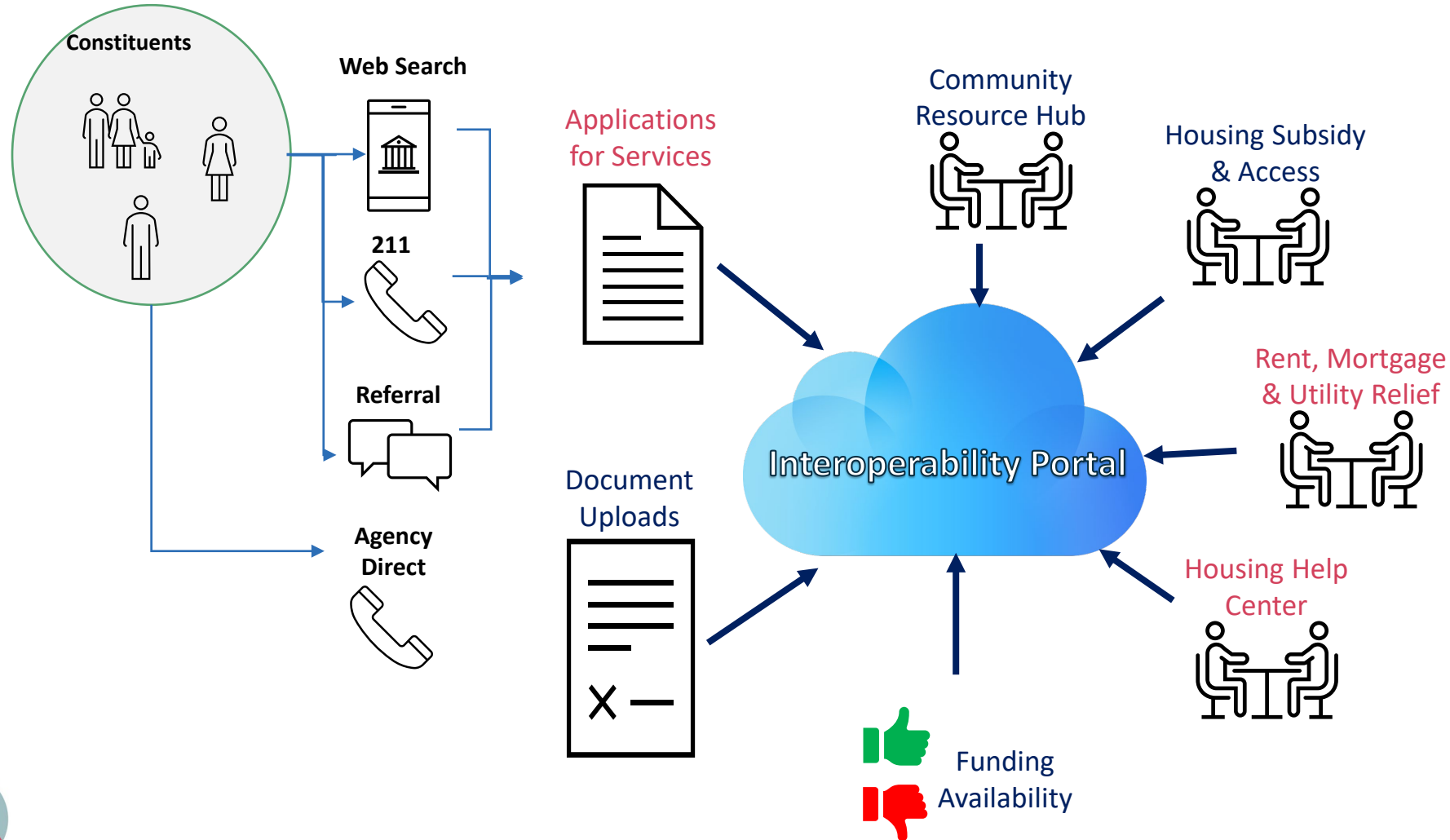
DATA DRIVEN DECISIONS AND ANECDOTES

Reporting from the portal will inform larger scale efforts:

- ☐ Who we are serving
- ☐ Who we are unable to serve today
- ☐ How we can better support agencies in the future
- ☐ Invert the burden: both to the client and the partner agencies



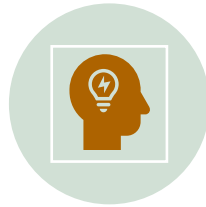
COMMUNITY INTEROPERABILITY MODEL



COMMUNITY HEALTH WORKERS



CUSTOMIZED
TRAININGS



TECHNICAL
ASSISTANCE



CAPACITY
BUILDING



CAPACITY BUILDING WITH THE METRO ATLANTA CITIES WELL-BEING INITIATIVE



- Eight-month initiative to support participants to integrate wellbeing metrics into local decision making
- Increase knowledge of city-level metrics and build capacity to use data for actionable policies that address the social determinants of health, health equity and systems thinking
- Share reference materials that help city leaders to operationalize wellbeing topics: wellbeing glossary , wellbeing metric informational pages and policy road map guide



Invert the Burden- Drive Systems Change & Investment



MULTI-HEALTH SYSTEM COLLABORATION

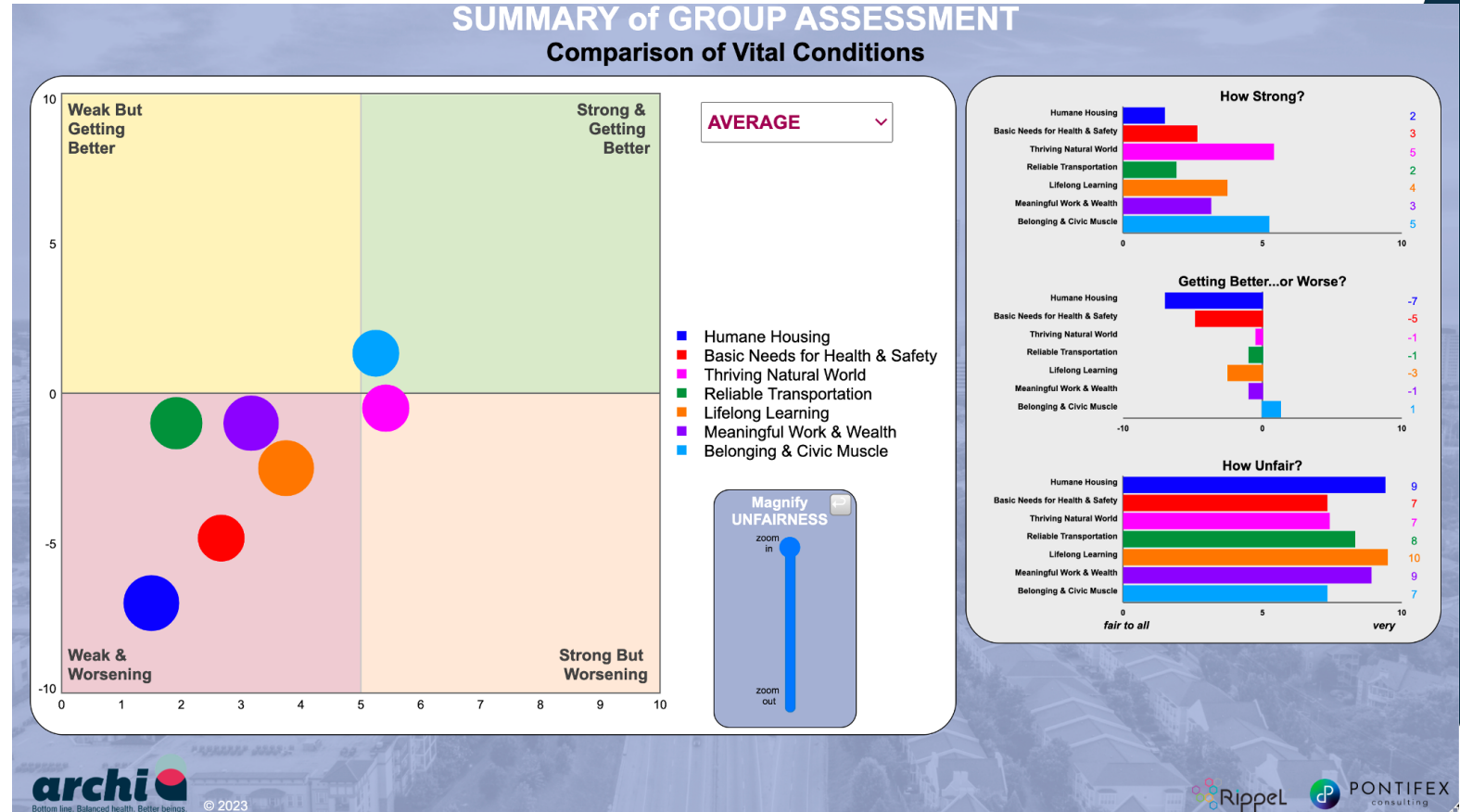
- HOUSING INVESTMENTS BY HEALTH SYSTEMS
 - ADDRESSING GAPS BETWEEN ACUTE CARE AND BEHAVIORAL HEALTH, SUBSTANCE ABUSE AND DEVELOPMENTAL DISABILITIES SERVICES
- DOLLARS INVESTED
 - LENGTH OF UNNECESSARY STAY FOR COMPLEX PATIENTS
 - ED UTILIZATION
 - TIME FROM IDENTIFICATION, ASSESSMENT AND SERVICE DELIVERY



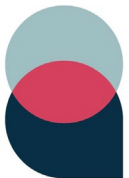
Changing the System: COMMUNITY MAPPING



- 40+ Stewards
- Lived and Learned Expertise (Intersectional)



THANK YOU!



[linkedin.com/company/
archi-collaborative](https://www.linkedin.com/company/archi-collaborative)