

LUCC

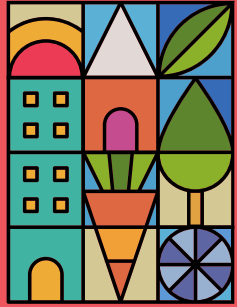
2024 LCI & CDAP Ideas Exchange



TODAY'S AGENDA

1. Welcome & Introductions
2. Presentations
 - a. Community Development Assistance Program (CDAP) Overview
 - b. Livable Centers Initiative (LCI) Overview
3. Pittsburgh Yards Tour
4. Presentations
 - a. Incorporating Climate Adaptation & Mitigation into your Projects
 - b. Incorporating Arts & Culture into your Projects
5. Ideas Exchange





C
D
A
P

Community Development
Assistance Program

ARC

Atlanta Regional Commission

COMMUNITY DEVELOPMENT ASSISTANCE PROGRAM

2024 LCI & CDAP Ideas Exchange | December 6, 2023



Renderings by Sizemore Group from CDAP Project: Old Fourth Ward Planning Priorities

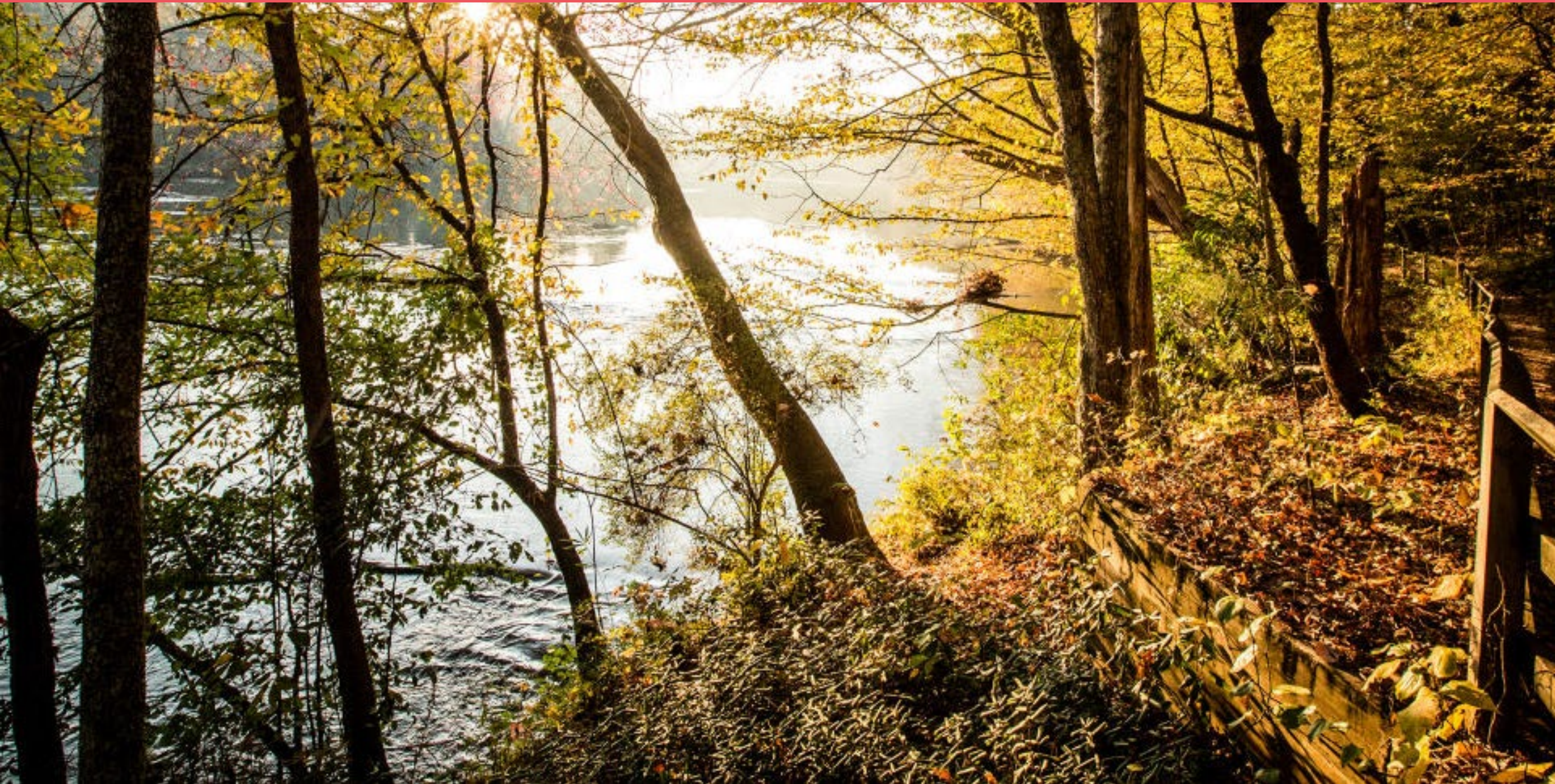
Community Development Assistance Program

The Community Development Assistance Program (CDAP) provides assistance to local governments, CIDs, & non-profits across the 11-county metropolitan region to undertake local planning activities that advance the goals of the Atlanta Region's Plan.

PROGRAM GOALS

- Implement the Atlanta Region's Plan at the local level
- Advance equitable planning processes & outcomes
- Promote resiliency to safeguard against future shocks & stressors
- Foster inclusive & meaningful community engagement

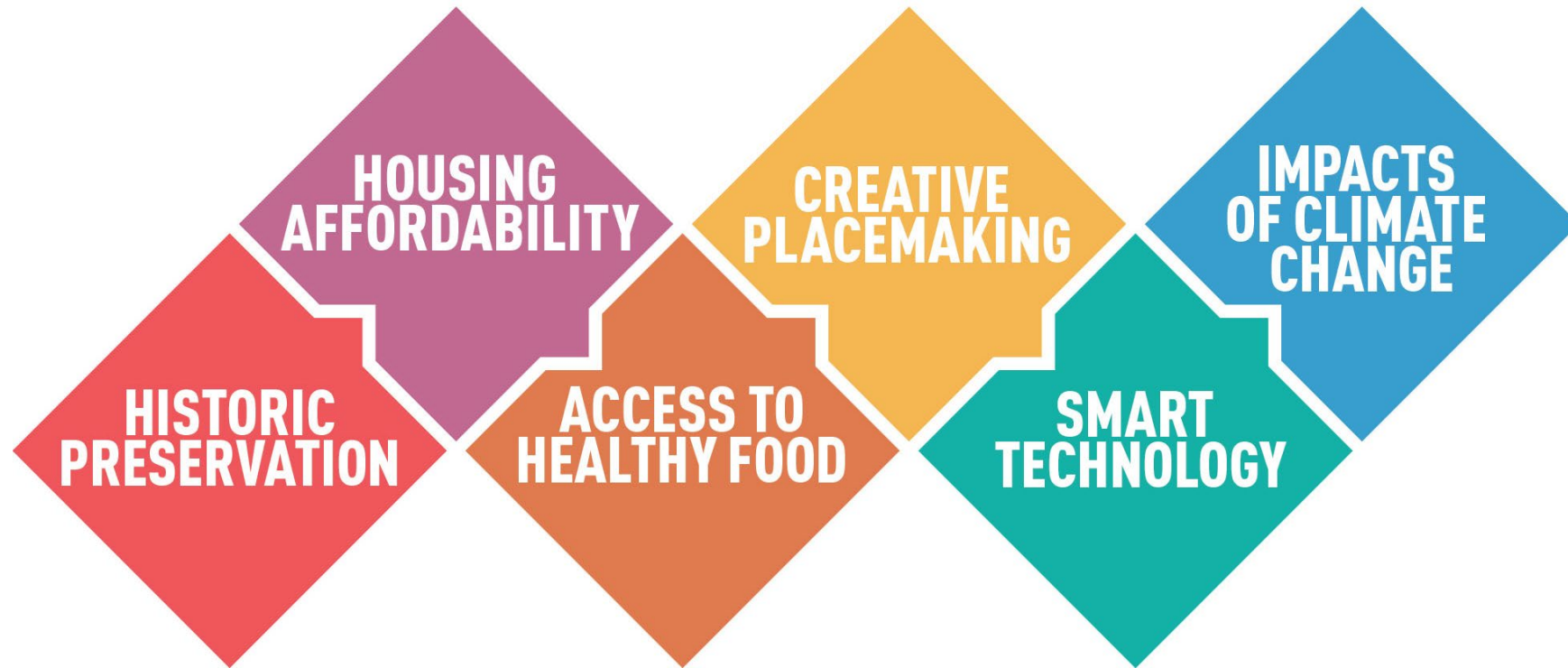
Equity & Resiliency



Community-Based Organizations



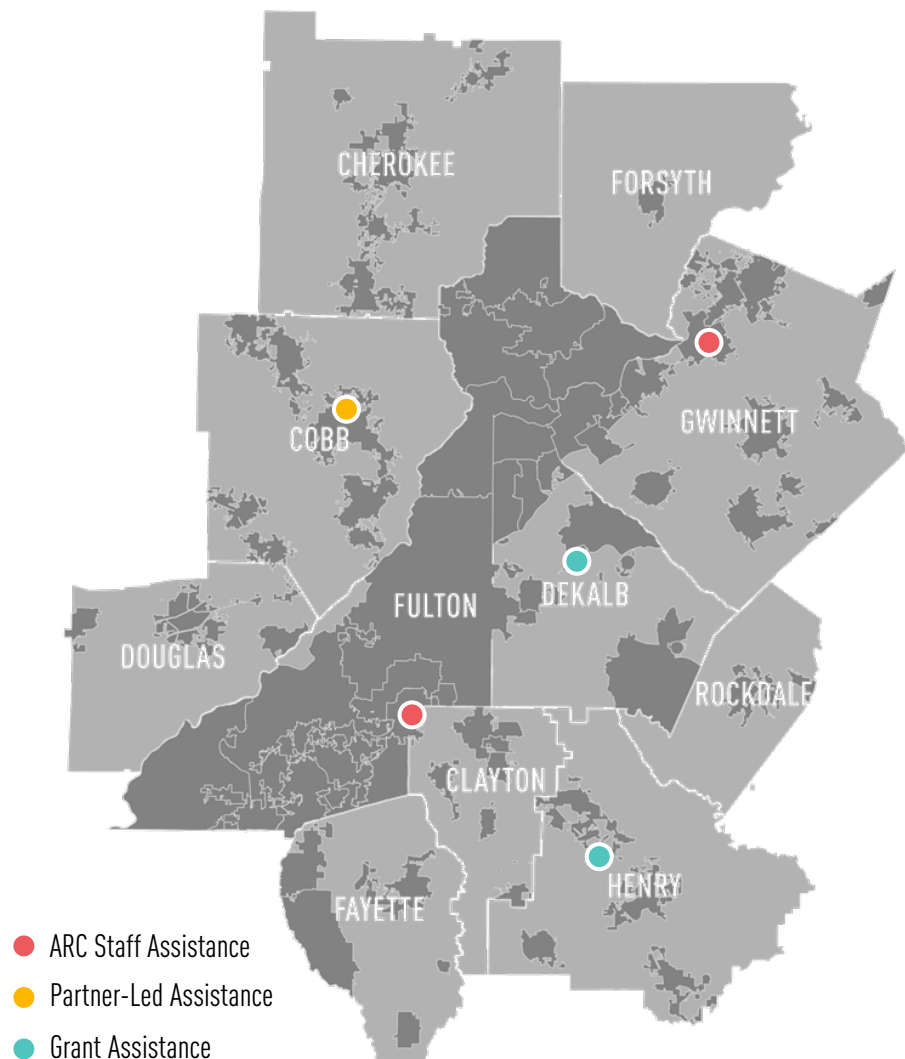
Priority Issue Areas



Climate Change Vulnerability Assessment



2023 Project Selections



ARC STAFF ASSISTANCE

- Suwanee Roundabout Master Plan
- College Park Housing Authority's College View Hills Community Engagement

PARTNER-LED ASSISTANCE

- Marietta Mountain to River (M2R) Trail Activation Strategy

GRANT ASSISTANCE

- DeKalb County Stone Mountain Trail Master Plan
- Henry County Local Bus Service Creative Placemaking Plan

5
SELECTED
PROJECTS

Types of Assistance



Partners



Sustainable Growth Program



Graduate Capstone Projects



Graduate Studio Projects



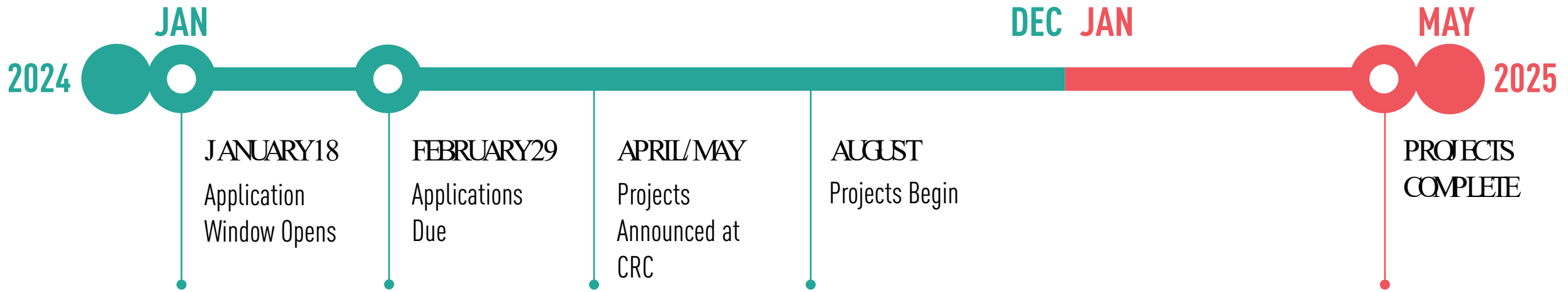
Technical Assistance Panels (TAPs)



Application Elements

- **A good idea that aligns with any ARC priority issue area**
- Completed answers to application questions, including how your project advances equity &/or resiliency & engages with a Community-Based Organization
- Applicant needs to be a representative from a local government, CID, or non-profit
- Signed letters of support from elected officials & relevant parties

Program Timeline



Questions?





Community Development
Assistance Program

ARC

Atlanta Regional Commission

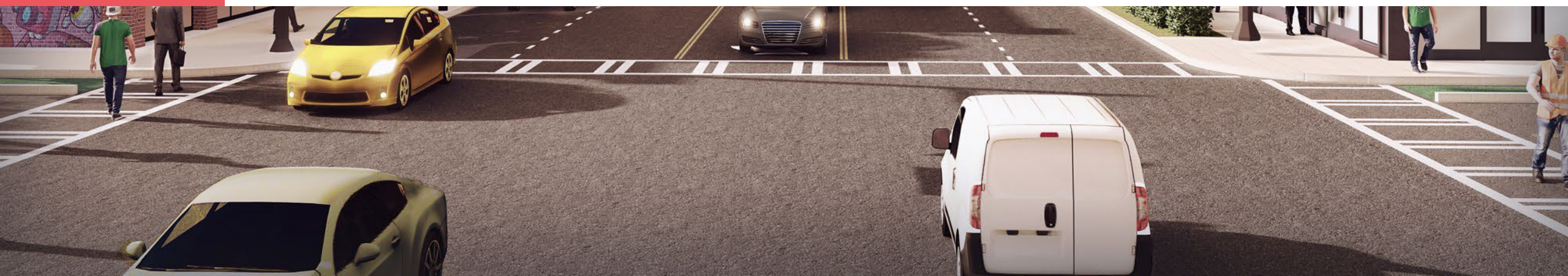
C
D
A
P

Contact Information:

Mollie Bogle, AICP

CDAP Manager

(e) mbogle@atlantaregional.org (p) 470.378.1574





LIVABLE CENTERS INITIATIVE

2024 LCI & CDAP Ideas Exchange | December 6, 2023



Renderings by Sizemore Group from CDAP Project: Old Fourth Ward Planning Priorities

LCI By the Numbers



131
LCI
Communities



178
Tactical
Studies



143
Transportation
Projects

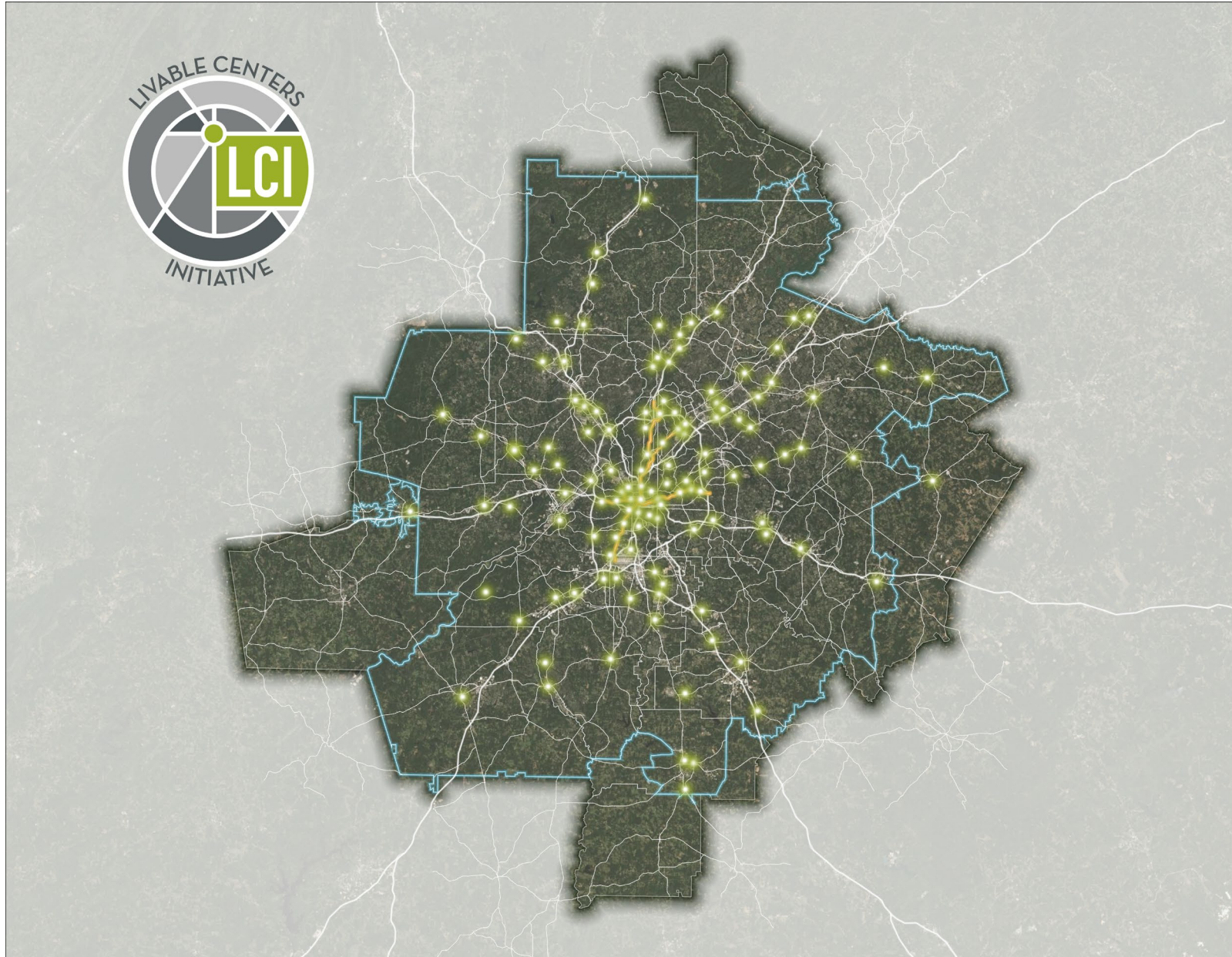
\$21.4 M

in Total Study
Funds

\$301 M

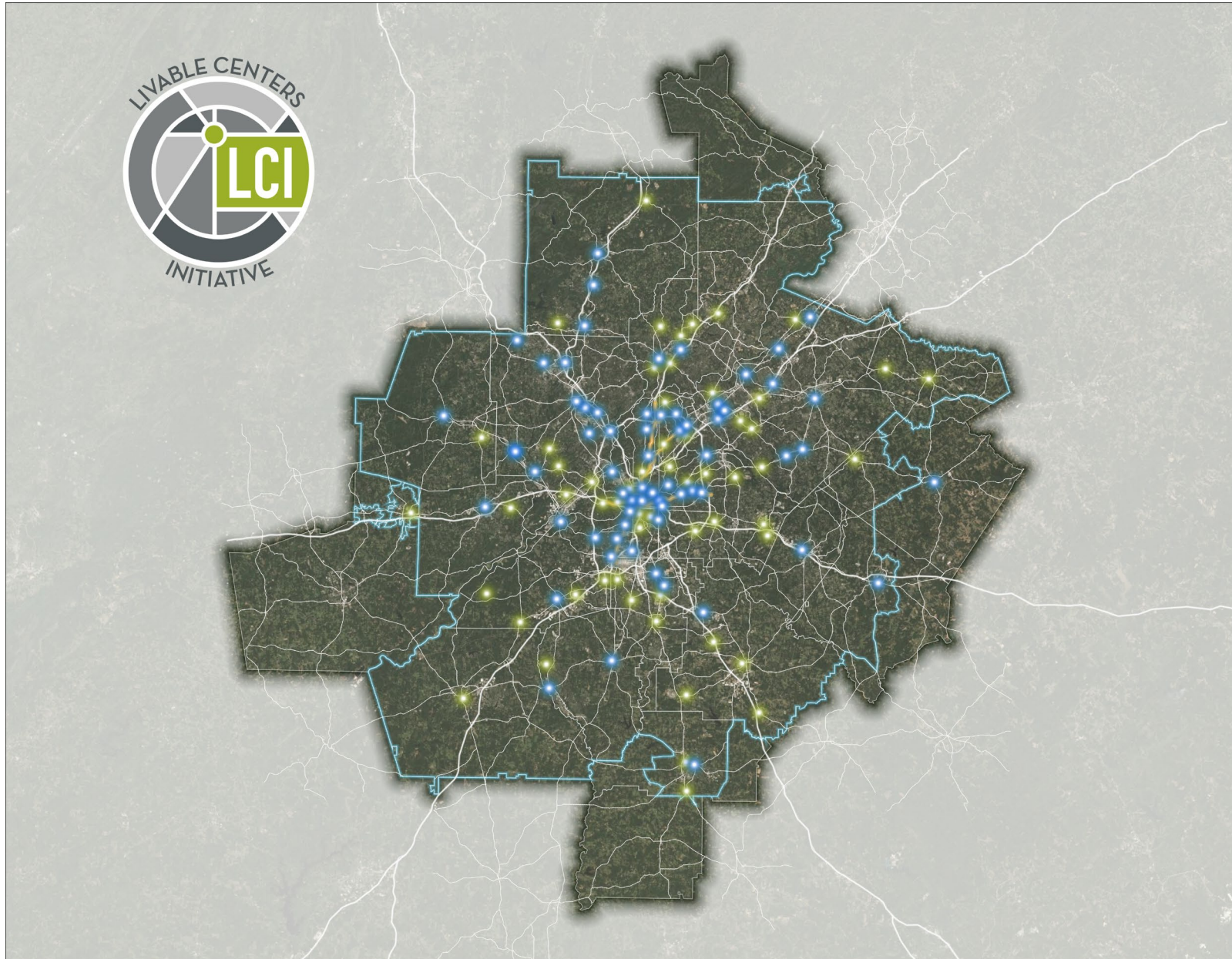
in Transportation
Project Funding

LCI's Impact



131
LCI
COMMUNITIES

LCI's Impact



131
LCI
COMMUNITIES

Basic LCI Information

1

REIMBURSABLE GRANT PROGRAM

- ARC pays up to 80% of the study amount
- Sponsor funds 20% of the study amount and must be a CID, local government, or transit agency
- \$1.6 M available in study funds for 2024

2

TWO YEAR STUDY TIMELINE

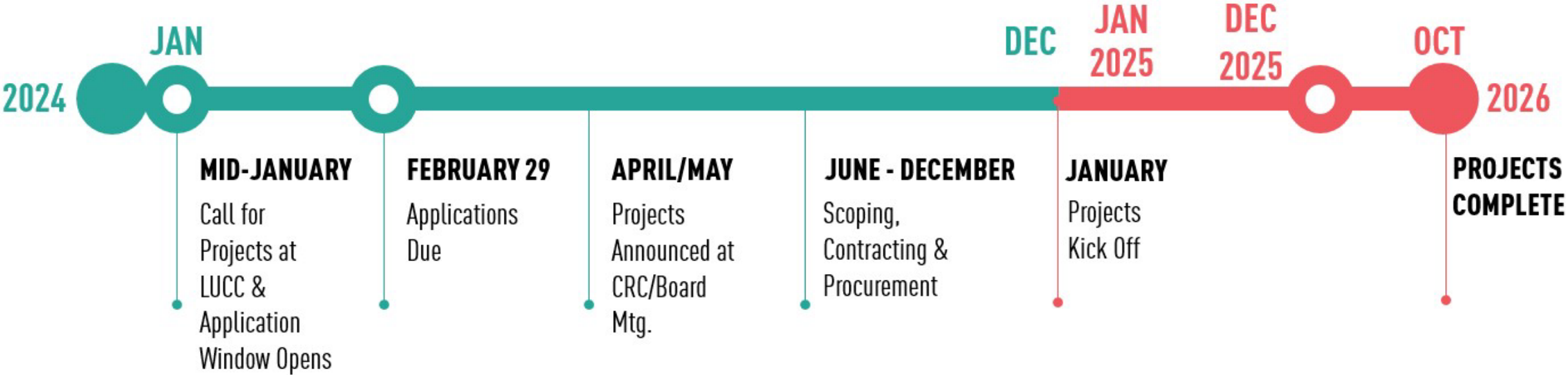
- 2024 studies must be completed by October 2026

3

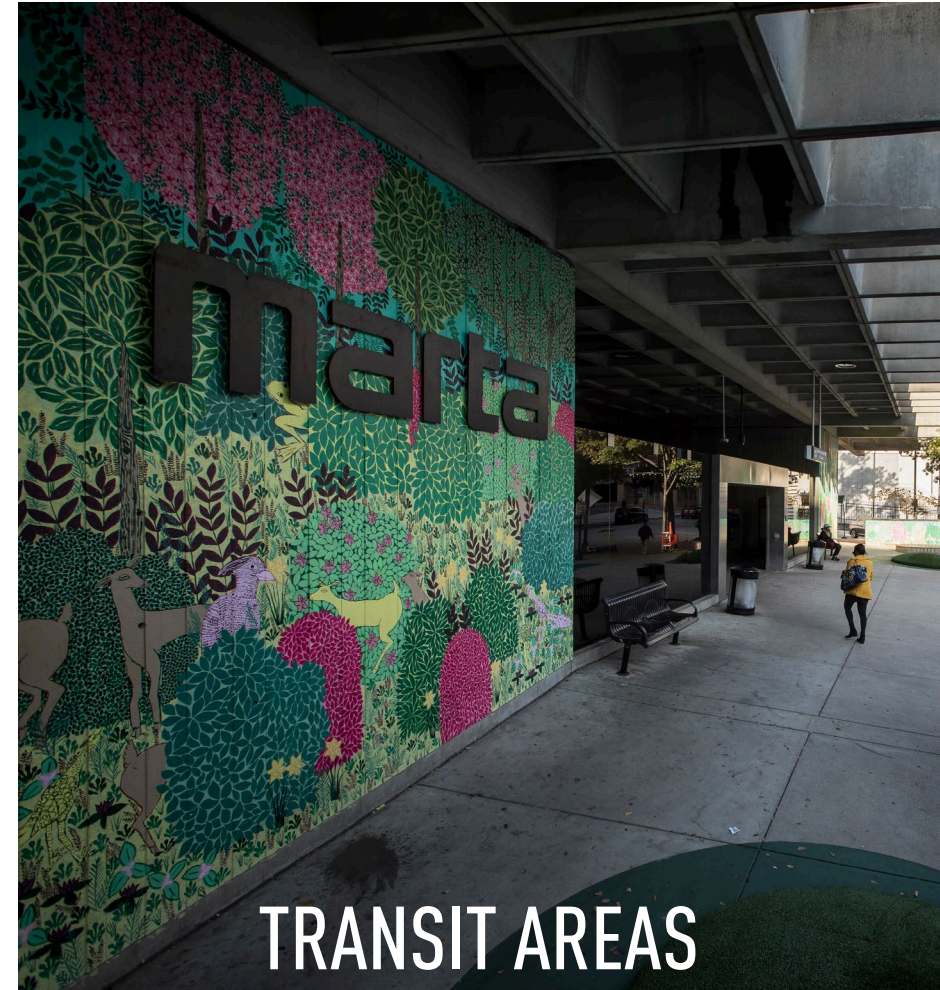
LAND USE & MULTI-MODAL TRANSPORTATION NEXUS

- Encourage co-location of diverse land uses at major transit, local, and regional centers for all ages, abilities, and income levels
- Enhance access to a range of travel modes, increase connectivity, and improve access for all users
- Foster public-private partnerships and sustained community support through engagement with all stakeholders, including community-based organizations and those who are historically underserved or underrepresented

2024 Study Schedule



LCI Focus Areas



Catalytic Studies



- Initial LCI plan or plan update
- Land use & transportation nexus
- Creative & inclusive engagement
- Contain policies & actions related to
 - Housing
 - Transportation Improvements
 - Economic Revitalization
- Include detailed implementation (i.e. zoning rewrite, transportation feasibility study, housing policies, etc.)
- Contains an Action Plan to track annual progress

Tactical Studies



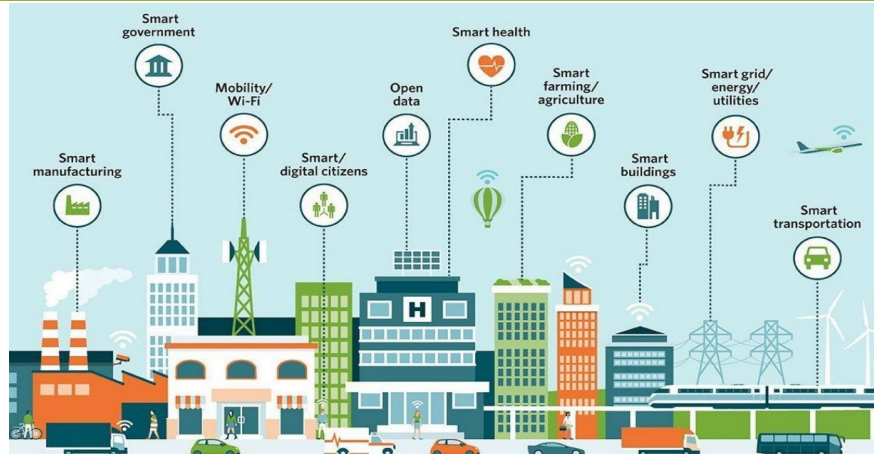
- Specific and detailed study
- Recommended as a next step in Catalytic LCI Study
 - Trail feasibility study
 - Further study of a proposed roundabout
 - Update zoning and design guidelines
 - Small area study within the LCI area
 - Community engagement plan for specific aspect of an LCI Study
 - Transit creative placemaking
 - Vehicle charging/electrification study

LCI Priorities



Affordable Housing

Image courtesy of Urbanize Atlanta



Smart Technology

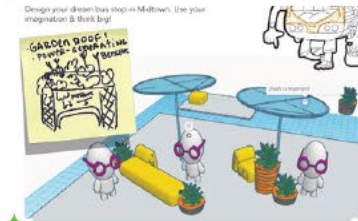


Creative Placemaking

Image from charmaineminnifield.com/ritual/murals



Green Infrastructure



Questions?





Contact Information:

Lauren Blaszyk, AICP
LCI Program Manager

(E) LBlaszyk@atlantaregional.org | (P) 470.378.1589



Renderings by Sizemore Group from CDAP Project: Old Fourth Ward Planning Priorities



ONE **great** REGION

A Regional Approach to Climate Action

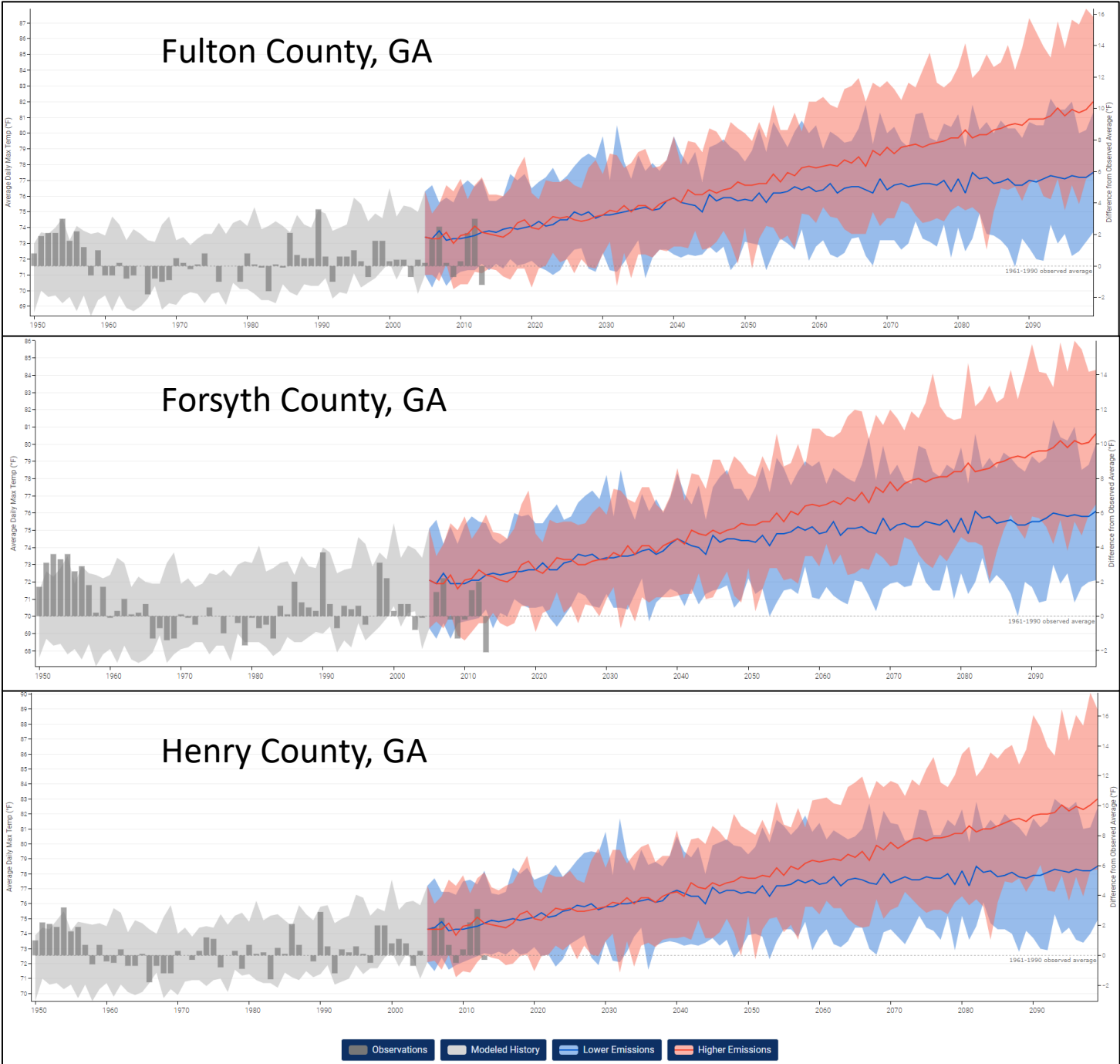
Jon Philipsborn

Climate and Resilience Manager

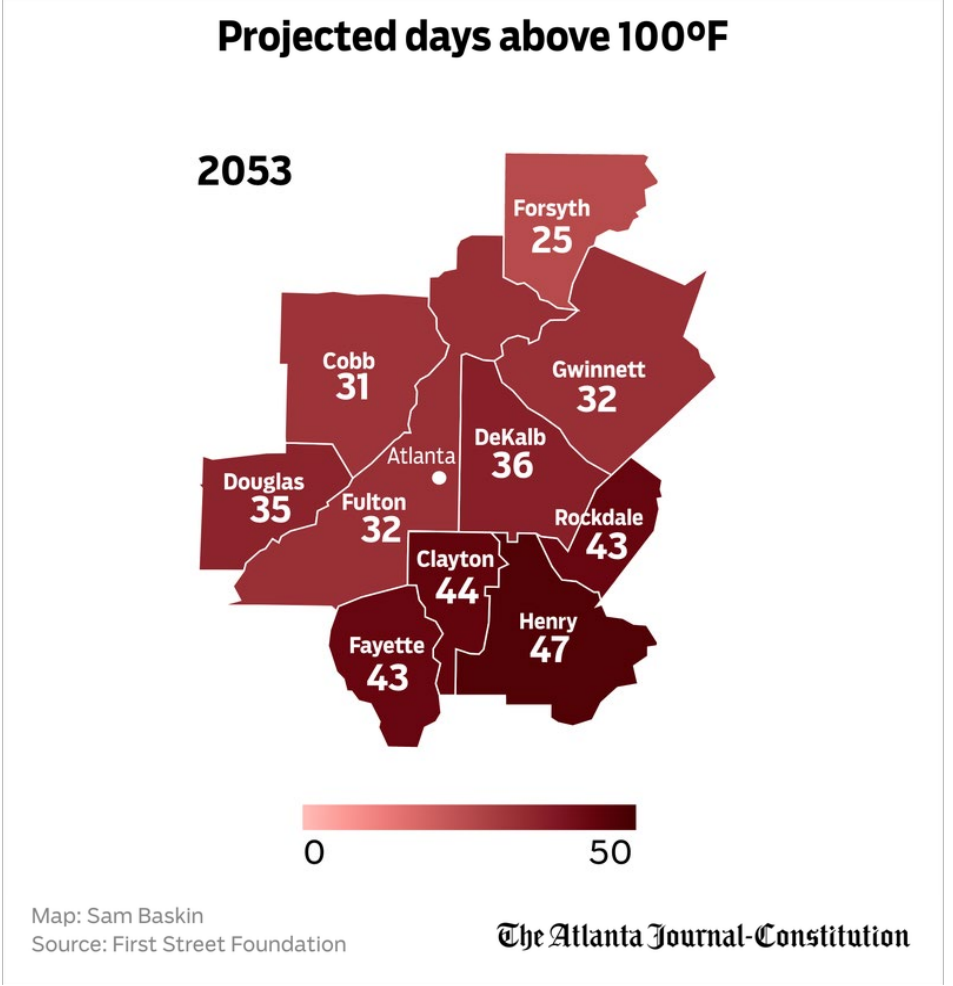
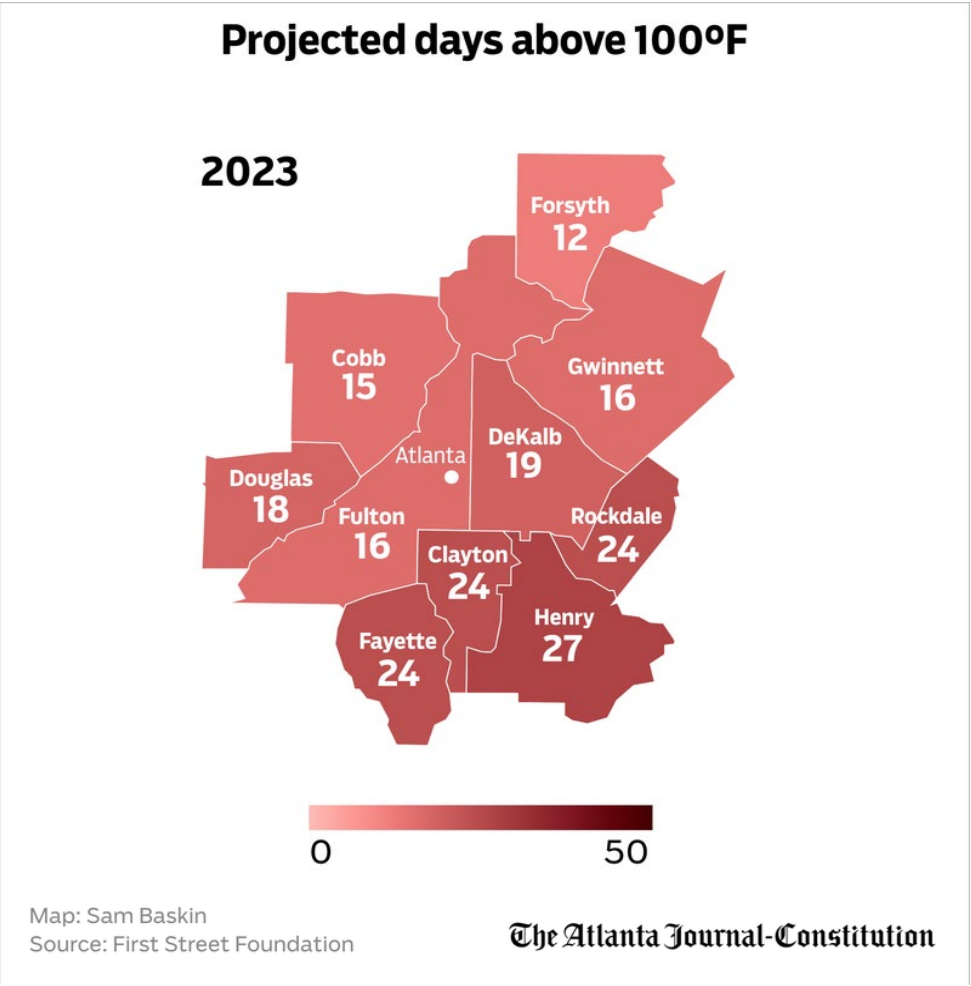


Temperature Increase

Average Daily Maximum Temperatures



Extreme Heat Events



Jan. 4, 2023 flash flooding



WSB Channel 2 Atlanta

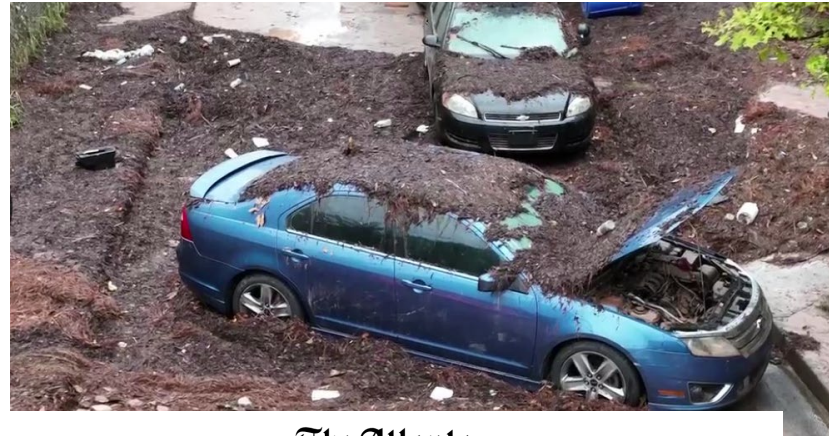
Cobb County road could be closed for days after storms cause it to partially collapse

By WSBTV.com News Staff, August 30, 2023



Torrential downpour during severe storm floods Downtown Atlanta, Clark Atlanta University

By FOX 5 Storm Team | Published September 14, 2023 3:32PM | Updated September 15, 2023 7:03AM | Severe Weather | FOX 5 Atlanta



The Atlanta Journal-Constitution

WEATHER UPDATE: School districts delay start due to expected heavy rain



Credit: WSBTV Videos

CRIME & PUBLIC SAFETY

By Rosana Hughes, The Atlanta Journal-Constitution

Updated Jan 24, 2023

Brookhaven residents want city to fix flooding problem

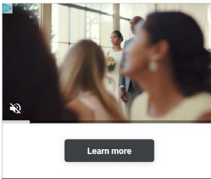
By Denise Dillon | Published August 1, 2022 | Brookhaven | FOX 5 Atlanta



Brookhaven residents complain about chronic flooding

When there is heavy rain, some Brookhaven residents say their yards turn into raging rivers and want the city to do something about it. However, the city says it is up to the residents.

BROOKHAVEN, Ga - Neighbors in one Brookhaven neighborhood said they've had problems with flooding for years, but said over time, it has gotten worse.



Hey check out these, shows



DISCOVER AMAZING TRAVEL SIDESTAGE.COM

The Atlanta Journal-Constitution

Gridlock Guy: Like snow days, Atlanta needs storm days



5th National Climate Assessment

Southeast Key Messages:

- 1) **Regional Growth Increases Climate Risks**
- 2) **Climate Change Worsens Human Health and Widens Health Inequities**
- 3) **Climate Change Disproportionately Damages Southeastern Jobs, Households, and Economic Security**
- 4) **Agriculture Faces Growing Threats, but Innovations Offer Help**

Southeast

Sea level rise and coastal flooding harm rapidly growing communities.
[{22.1}](#)



Extreme heat threatens human health, especially stressing urban communities.
[{22.2}](#)



Heavy rain and longer dry spells reduce water supply and access.
[{22.4}](#)



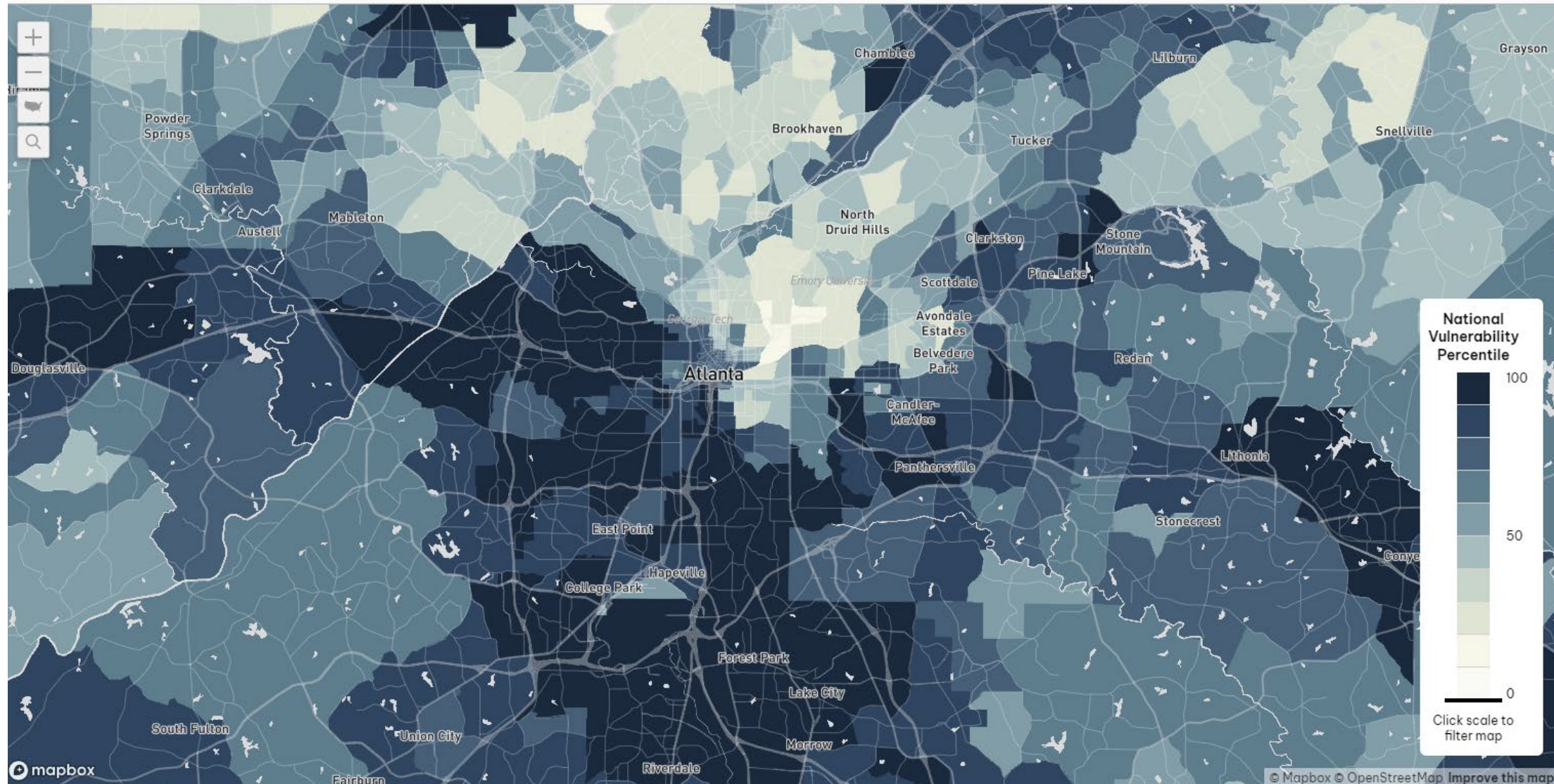
Overall Climate Vulnerability

Score combining environmental, social, economic, and infrastructure effects on neighborhood-level stability.

MAP BOUNDARIES

Counties

Tracts



Decarbonization



On The Path to 100% Clean Electricity



May 2023

CARBON REDUCTION STRATEGY

November 15, 2023

Clean Energy Atlanta

A Vision for a 100% Clean Energy Future

ARC's Climate Change & Resilience Umbrella



ARC is Taking Action on Climate Change

Climate Mitigation

- GHG Emissions Reductions
- Net-Zero Planning
- Energy Efficiency
- Electrification
- Decarbonization

Climate Adaptation and Resilience

- All-Hazards Vulnerability Assessments
- Adaptation Planning
- Nature-based solutions
- Resilient Infrastructure
- Long-term Adaptation

Through:

- Education and Convening
 - Technical assistance
- Develop model policies, ordinances, development standards
 - Providing project funding
 - Assisting with grant support
- Regional Planning (and directing Implementation)

Livable Centers Initiatives

Incorporating climate change considerations into LCI: reducing emissions and preparing for decarbonization; adapting to changes and becoming more resilient to extreme weather events

Climate Mitigation

- ▮ Increasing renewable energy
- ▮ Improving energy efficiencies
- ▮ Electrification / Electric Vehicles
- ▮ Decrease car dependencies
- ▮ Enhancing tree canopy

Climate Adaptation and Resilience

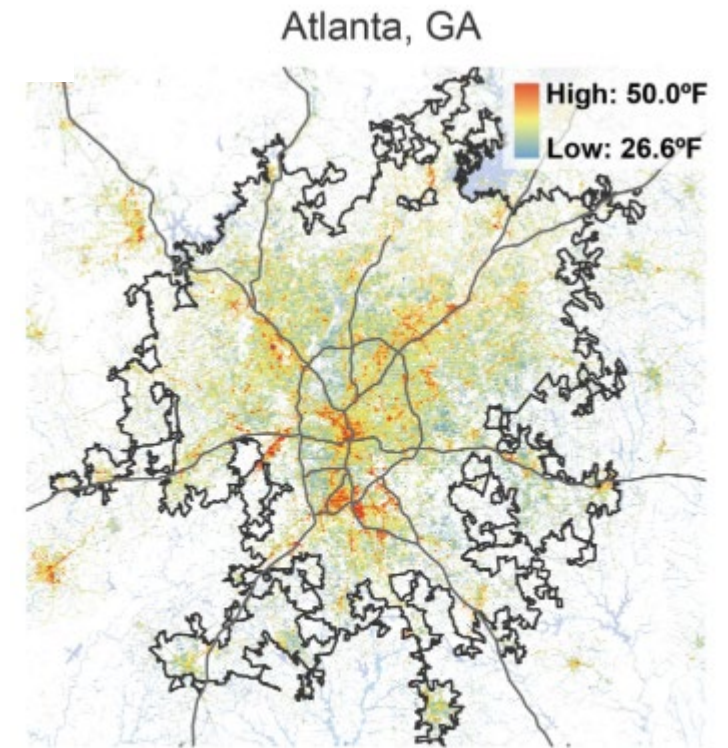
- ▮ Considering future conditions
- ▮ Flood risk reduction
- ▮ Addressing urban heat island
- ▮ “Resilience Hub”
- ▮ Nature-based solutions

Community Development Assistance Program

Climate Change Vulnerability Assessment (CCVA)

- **Task 1:** Define Baseline Conditions (community, environment, infrastructure)
- **Task 2:** Describe Historic/Current Trends and past extreme weather events
- **Task 3:** Project Future Conditions as a result of climate change
 - Temperature change
 - Precipitation change
 - Extreme weather events
- **Task 4:** Assess Vulnerability (combining baseline with future projections)
- **Task 5:** Provide Suite of Recommendations for next steps

In tandem Capacity Building Sessions with staff, elected officials and key stakeholders



<https://nca2023.globalchange.gov/chapter/appendix-4/#section-2>



Climate Pollution Reduction Grant (CPRG)

Quick Refresh!

Climate Pollution Reduction Grants (CPRG) Program



2022 Inflation Reduction Act authorized the creation of new, two-phase \$5 billion program:

- 1) **CPRG Noncompetitive Planning Grants** to develop strong climate pollution reduction strategies (\$250 M)
 - Program guidance issued March 2023
- 2) **CPRG Competitive Implementation Grants** to help put plans into action (\$4.6 B)
 - Notice of Funding Opportunity issued late September 2023
 - www.epa.gov/inflation-reduction-act/about-cprg-implementation-grants

One Planning Grant – 3 Deliverables over 4 Years



Priority Climate Action Plan (PCAP)

- States/MSAs: due **March 1, 2024**
- Tribe/territory: due **April 1, 2024**
- Near-term, implementation-ready, **priority greenhouse gas (GHG) reduction measures**
- **Prerequisite** for eligible entities in the area covered by the plan to apply for implementation grants



Comprehensive Climate Action Plan (CCAP)

- Due in **2025, 2 years after award** (later for tribes and territories)
- **Address all sectors** and significant GHG sources/sinks
- **Near- and long-term** GHG emission reduction goals and **strategies**



Status Report

- Due in **2027** (N/A for tribes or territories)
- **Updated** analyses and plans
- **Progress and next steps** for key metrics

CPRG Implementation Grants – Applying?

Submit information via Emission Reduction Measure ID survey to by December 31:

- Reduction measure(s) that include one or more CPRG key sectors
- Amount of CO2 reduction (carbon sink, if applicable) for each measure
- Government as a lead or partner

Additional nice to have info:

- Low Income Disadvantaged Community (LIDAC) analysis
- Workforce development analysis
- Criteria air pollutant analysis



Stay connected & engaged with Atlanta MSA CPRG

- 📌 SHARE – Your community's climate action, clean energy, or sustainability plans
- 📌 SIGN UP – For notification of upcoming stakeholder opportunities
- 📌 SPREAD THE WORD – Share the stakeholder sign up survey with colleagues, friends, other organizations



atlantaregional.org/climatechange

Climate@atlantaregional.org

Take Aways

- Region's climate is changing; extreme weather events are already creating significant impacts
- ARC is *Taking Action* on Climate Change
 - Both Climate Mitigation and Climate Resilience
- Incorporating climate change considerations into LCIs can make projects stronger; create co-benefits
- Climate Change Vulnerability Assessment (CCVA) as a new CDAP option
- ARC should be seen as a technical resource on climate change and resilience



<https://nca2023.globalchange.gov/art-climate/>



Thank You

Jon Philipsborn

Climate and Resilience Manager

jphilipsborn@atlantaregional.org

470.378.1613

The logo for 'ONE great REGION' features the word 'ONE' in a small, yellow, sans-serif font. Below it, the word 'great' is written in a large, bold, yellow, sans-serif font. Below 'great', the word 'REGION' is written in a medium-sized, yellow, sans-serif font. The background of the slide is a dark gray with a pattern of overlapping, semi-transparent, colorful rectangles in shades of blue, green, orange, and red.

ONE
great
REGION



ABOUT TCP

- It is our mission to enrich and strengthen local communities through quality arts-based education and outreach, while celebrating and elevating the city's creative talents through local artist residency programs.

- We are the city's first non-profit to support the creative class through affordable housing programs.

- Since 2011, TCP has supported over 60 artists through its residency program and subsidized studio and housing programs.

Hapeville's Most Recent 2017 LCI Update



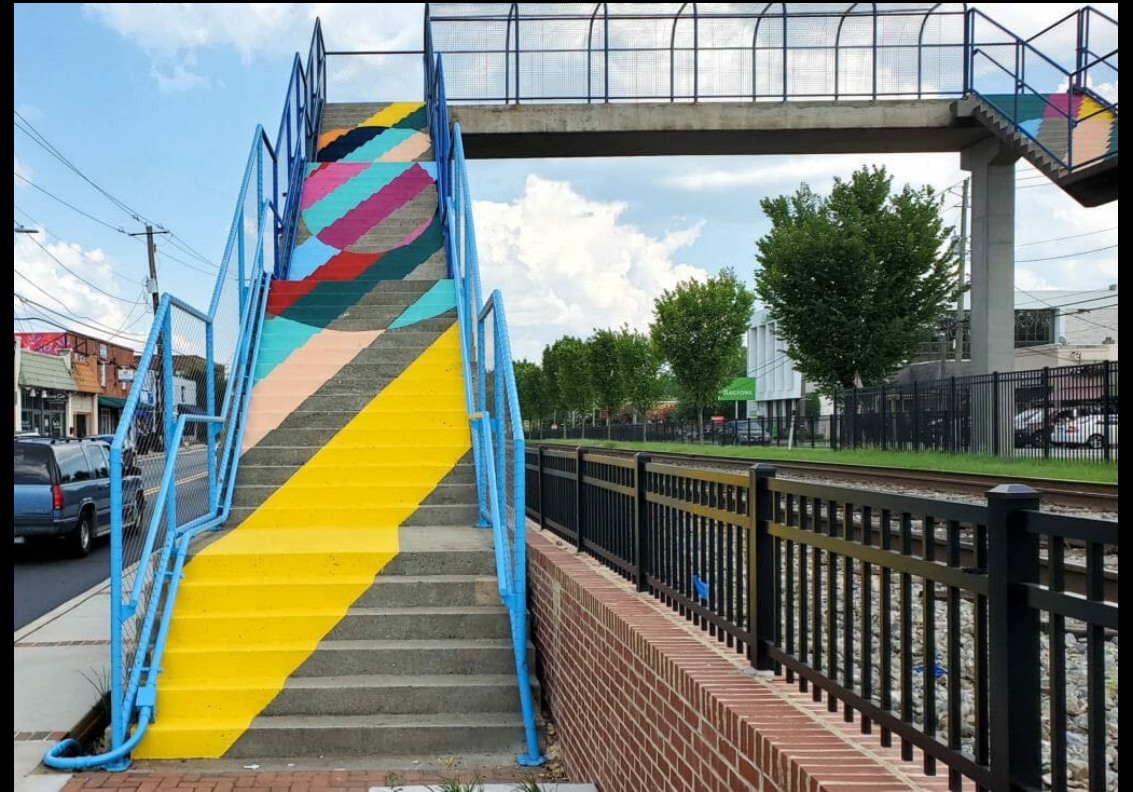
Community Vision

To create vibrant, mixed-use Downtown and Gateway Nodes that serve the residents, visitors, businesses, and employees, while celebrating the city's small-town charm and character.

COMMUNITY-IDENTIFIED GOALS

- TRANSPORTATION- Enhance walkability in the city, beautify streetscapes
- LAND USE- Support the growth and sustainability businesses in downtown. Provide a higher density housing in downtown and affordable/senior housing
- VISION & CHARACTER- Encourage and enhance the growing art scene in Hapeville.

Increase Walkability- Hapeville Pedestrian Bridge- T-SPLOST, Grant Funding, and Hotel/Motel Tax Funding



In addition to the improvements to the pedestrian bridge and ADA compliant pedestrian crossing, Hapeville has installed over 4 miles of new sidewalk in the city. With over 24 miles of sidewalk in the City, the T SPLOST is a critical tool in replacing dilapidated sidewalks.

Land Use- The Density Paradox

- How do we preserve charm while supporting existing/attracting new businesses?
- Adoption of future land use maps to support nodes that encourage desired development
- Leveraging the conditional use permit process to require desired elements to develop
- Land use and zoning is an ongoing process and is constantly tweaked





Using the Arts to Enhance
Branding & Character, funded
by Hotel Motel Tax Dollars

